

2port HDMI 2.0 KVM Switch

Thanks for buying our HDMI KVM switch. It allows you to access two computers /DVR/NVR from a single USB keyboard,USB mouse and monitor console. They are widely used in security exchange market ,multimedia conference room,booking hall ect...

◆ Product Features:

- One USB console controls 2HDMI-interface computers /DVR/NVR
- Switch Mode: wired remote push button switch
- Superior video quality : 4096x2160@60Hz, 1080P, 1080I, 720P,etc
- Multiplatform support: Windows 10/7/2000/XP/Vista、Linux and Mac;
- Support Hot plug & play
- Support HDCP, Support auto EDID
- Support 4:4:4
- With USB2.0 Hub
- With audioµphone

◆ Switch Mode:



◆ How to Set up:



1. Power off all devices;
2. Connect your computers to the Switch by USB and HDMI cables.
3. Plug your mouse and keyboard to correspondent USB mouse and keyboard port on front panel
4. Connect your Monitors to output port of the KVM switch
5. Plug in your speaker or microphone if needed;
6. Power on the switch and boot all devices;

◆ Connection Diagram:



◆ Sound Card Settings (Optional) :

1. HDMI Sound Settings

Right click  on the desktop taskbar, popup task box  , Click 'Playback devices', then jump out of the interface shown in Figure A.

Then select the 'AMD HDMI Output', right click and show as Figure B. And then select the 'Set as Default Device'.


It displayed tick status  AMD HDMI Output
AMD High Definition Audio Device
Default Device , which indicates successful setup. As the Figure C.



Figure A

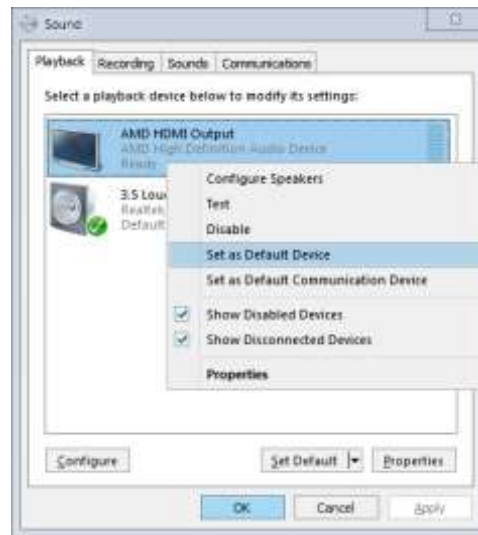


Figure B

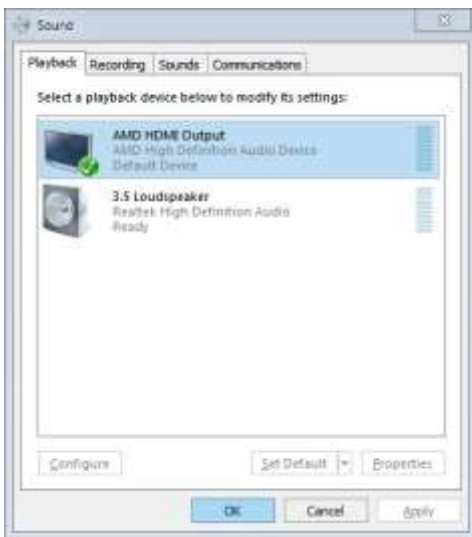



Figure C

2. 3.5 Interface Sound Settings

Right click  on the desktop taskbar, popup task box



, Click '3.5 Loudspeaker', then jump out of the interface shown in Figure A. Then select the '3.5 Loudspeaker', right click and show as Figure B. And then select the 'Set as Default Device'.



It displayed tick status , which indicates successful setup. As the Figure C.



Figure A

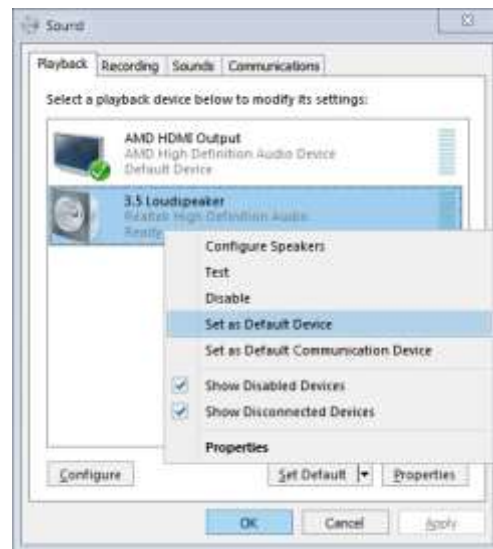


Figure B

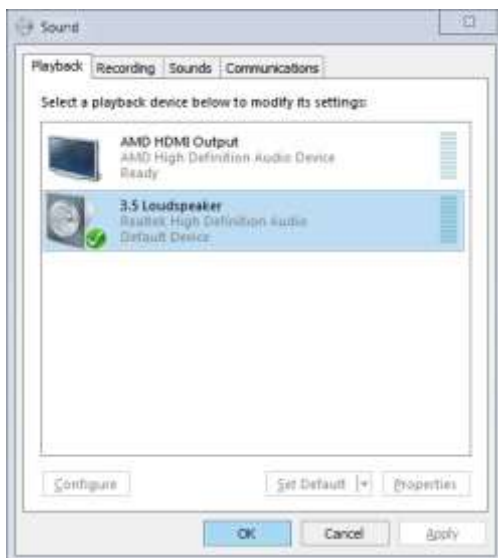


Figure C

◆ FAQ & Trouble Shooting

Q: Keyboard or mouse does not work.

1. Firstly, make sure that the cable is already connected to the computer side, there is no signal exception, and the power has been connected.
2. After the image switch normally, mouse and keyboard access to the KVM switcher, wait a few seconds for the computer to complete the device recognition.
3. Turn off the kvm and restart power to re-identify