

User Manual

Triple Monitor&Quad Monitor KVM Switches

I. Applicable Models:

Triple Monitor HDMI KVM Switch 2 Port (USB2.0 Version)

Quad Monitor HDMI KVM Switch 4 Port (USB2.0 Version)

Triple Monitor HDMI KVM Switch 2 Port (USB 3.0 Version)

Quad Monitor HDMI KVM Switch 2 Port (USB 3.0 Version)

These models are designed to control up to 2 or 4 multi-graphics card multi-output computers, laptops and other applicable devices from one set of keyboard, mouse and multiple monitors for extended or duplicated display. Mouse and keyboard can be used alternately between multi monitors, operating two interface files respectively. It is suitable for high resolution display and monitoring, multimedia design, multimedia post-production and video editing etc. It provides users with great convenience. There are four models for your selection in this series KVM switch. Please refer to the correspondent product type for product features and specifications in this manual.

II. Product Features for USB2.0 Version:

- One USB console controls 2/4 multi-graphics card multi-output computer and other devices.
- Support extended or duplicated display depending on computer setting.
- Support Resolution: 480I, 480P, 720P, 1080I, 1080P, 3840x2160@60Hz.
- Multiplatform support: Windows 10/7/2000/XP/Vista、Linux and Mac;
- Support hot plug & play
- Support HDCP and auto EDID
- Support auto detection , if one computer is powered off, the switch will automatically switch to the next powered-on computer (The default is in closed state,if you want to open it. Please read the below setting operation instructions).
- With memory function in case of power-down
- Support independent mouse keyboard switch, even without USB signal input, you can switch the input device easily by keyboard or mouse.
- Auto Scan Mode for monitoring all computers /DVR/NVR
- With USB2.0 Hub and separate audio & microphone output

III. Product Features for USB3.0 Version:

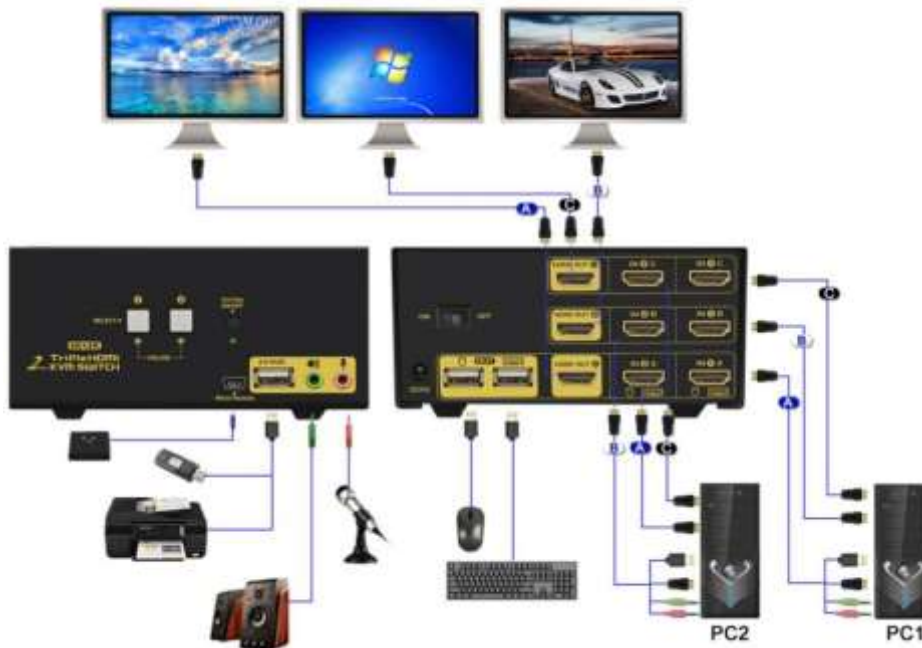
- One USB console controls 2/4 multi-graphics card multi-output computer and other devices.
- Support extended or duplicated display depending on computer setting.
- Support Resolution: 480I, 480P, 720P, 1080I, 1080P, 3840x2160,4096x2160@60Hz.
- Multiplatform support: Windows 10/7/2000/XP/Vista、Linux and Mac;
- Support hot plug & play
- Support HDCP and auto EDID

- Support auto detection , if one computer is powered off, the switch will automatically switch to the next powered-on computer (The default is in closed state,if you want to open it. Please read the below setting operation instructions).
- With memory function in case of power-down
- Support independent mouse keyboard switch, even without USB signal input, you can switch the input device easily by keyboard or mouse.
- Auto Scan Mode for monitoring all computers /DVR/NVR
- With 2 extra USB3.0 HUB, data transferring rate up to 5Gbps/s (10 times faster than USB 2.0)
- Support stereo 3.5 audio output.

IV. How to Set Up:

1. Power off all devices;
2. Connect Cable A from your computer to PC1 IN A of the Switch(**very important**);To the USB3.0Version cable, you should connect the USB3.0 cable from your computer to the USB port of the KVM, then connect the HDMI cables.
3. Connect Cable B/C/D from your computer to PC1 IN B or C or D of the Switch (If an adapter is needed, please connect your adapter with Cable B/C/D;
4. Repeat step 2 & 3 to connect other input devices to correspondent KVM ports;
5. Plug your mouse and keyboard to correspondent USB mouse and keyboard port on back panel; for gaming or mechanical keyboard, please plug them into the USB HUB on front panel if they did not work well on USB keyboard port.
6. Connect your Monitors to output port of the KVM switch
7. Plug in your speaker or microphone if needed;
8. Power on the switch and boot all devices;
9. Set computer display modes to extended display / duplicated display as needed.

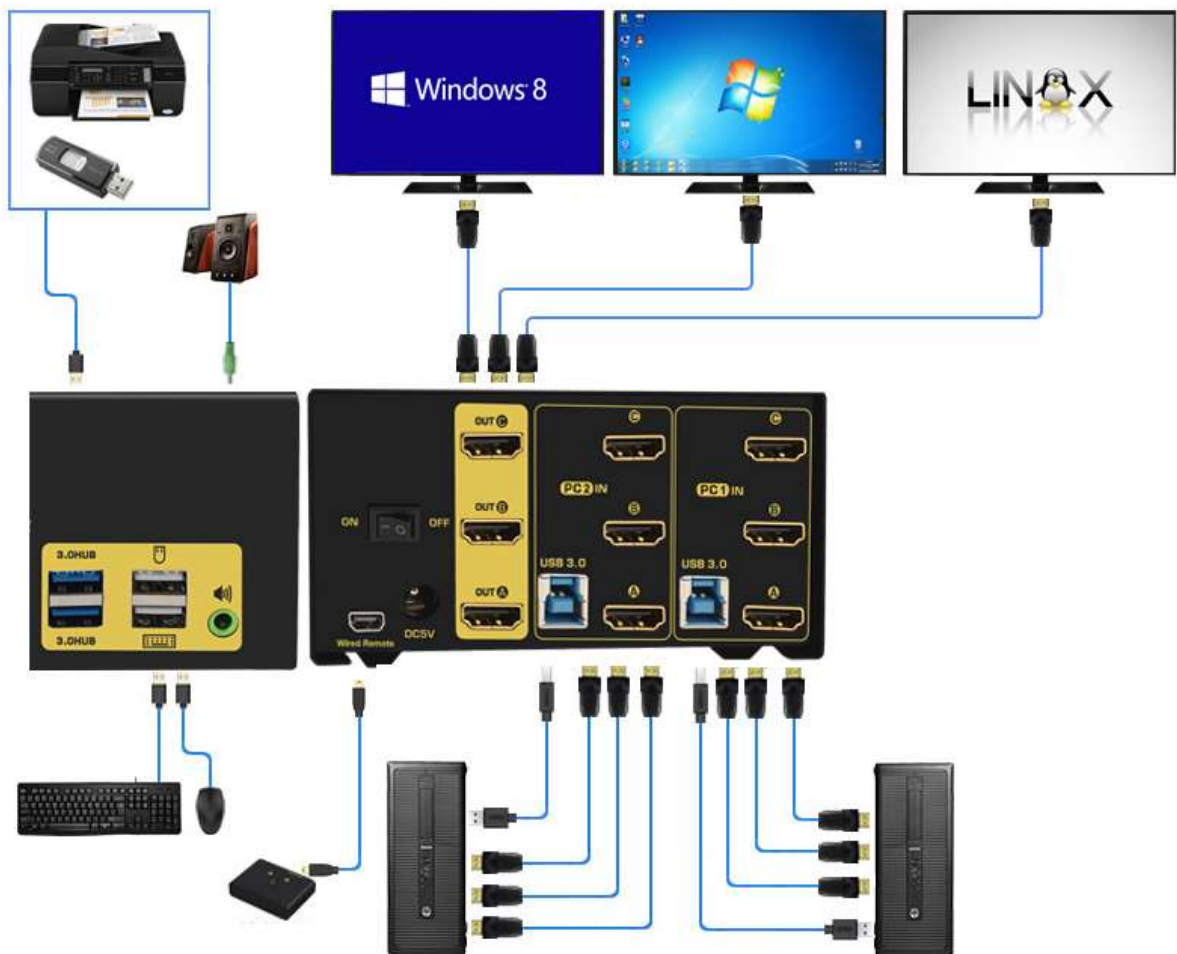
- Triple Monitor HDMI KVM Switch 2 Port(USB2.0 Version):



- Quad Monitor HDMI KVM Switch 4 Port(USB2.0 Version):



➤ Triple Monitor HDMI KVM Switch 2 Port(USB3.0 Version):



➤ Quad Monitor HDMI KVM Switch 2 Port(USB3.0 Version):



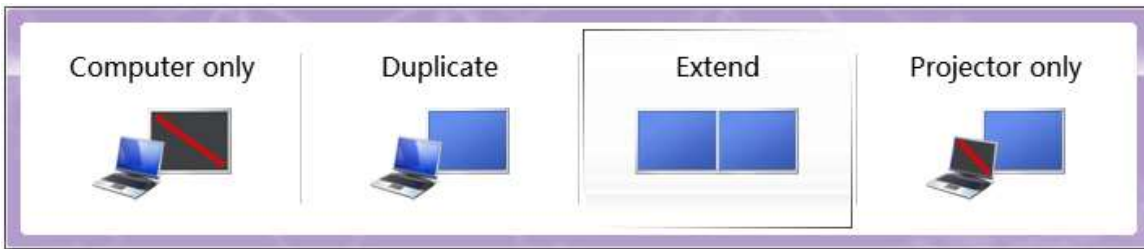
Note: The monitors take around 20 seconds to display at first set-up, later on it only takes around 2-3 seconds to display upon switching.

V. Dual graphics card display settings

Take win10 as an example: hold down the keyboard windows + P, as



shown in the figure , a dialog will pop up as below.



Select Duplicate or Extend, then the two monitors can be displayed at the same time per selected display mode.

VI. Switch Modes :

- Button Switch : Switch to any port by buttons on front panel.



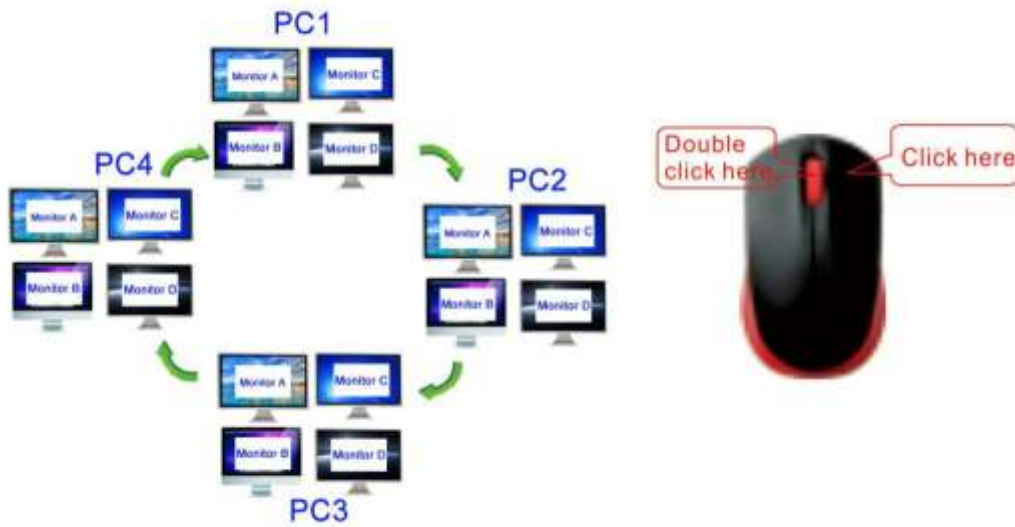
- Click mouse Switch :

2 port KVM switch: Double click the mouse middle roller for circular switching (within 1 second)

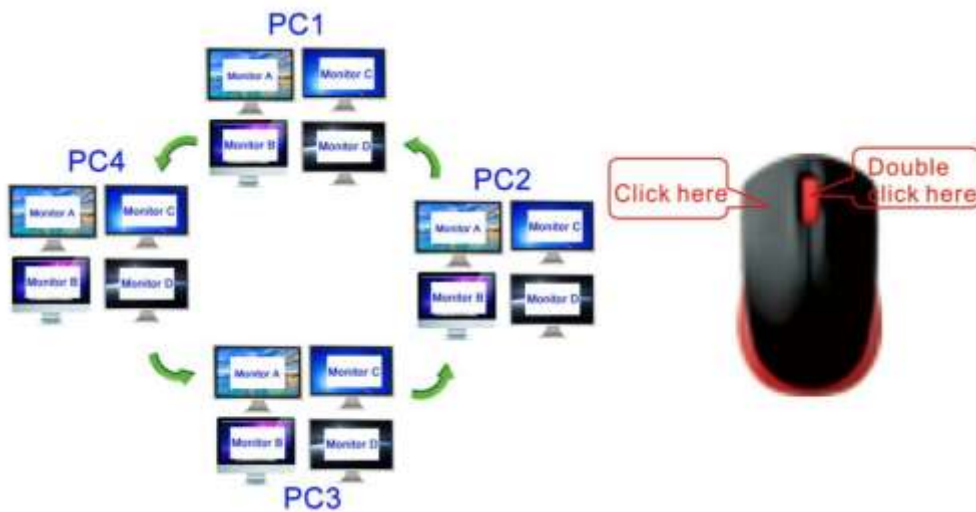


4 port KVM switch:

- a. Double click the middle roller of mouse, and then press the right mouse button to switch to the next port.



- b. Double click the middle roller of mouse, then press the left mouse button to switch to the previous port.



➤ Keyboard Hot-key Switch : Double click the right **【Ctrl】** + Port Number + **【Enter】**

VII. Hotkey Setting :

Default hot-key is the right **【Ctrl】** (the Ctrl key on right side of keyboard). If use the right **【Ctrl】** conflicts with other hot-key, the hot-key can be set to **【Num lock】** or **【Scroll Lock】**.

For example : Double click the right **【Ctrl】** + **【Num lock】** + **【Enter】** , The hot-key changes to **【Num lock】** ; double click the right **【Ctrl】** + **【Scroll Lock】** + **【Enter】** , The hot-key changes to **【Scroll Lock】** key. If the hot-key set as **【Scroll Lock】** , and you want to set the hot-key as the left **【Ctrl】** key , then double click the **【Scroll Lock】** + the left **【Ctrl】** + **【Enter】** , then the hot-key changes to the left **【Ctrl】**.

Hotkey Change Setting:

Double click the right 【Ctrl】 + 【Num lock】 + 【Enter】	Hotkey change to 【Num lock】
Double click the right 【Ctrl】 +left 【Ctrl】 + 【Enter】	Hotkey change to the left 【Ctrl】
Double click the right 【Ctrl】 + 【Scroll Lock】 + 【Enter】	Hotkey change to 【Scroll Lock】
If the hotkey is changed to 【Scroll Lock】 , You want to change it to the left 【Ctrl】 , Then double click 【Scroll Lock】 +the left 【Ctrl】 + 【Enter】	

VIII. Keyboard Hot-key Operation :



Double click the right 【Ctrl】 → 【N】 → 【Enter】	The KVM can switch to the equipment you choose.
Double click the right 【Ctrl】 → 【S】 → 【Enter】	Turn on/off the Anto-scan function
Double click the right 【Ctrl】→【S】→【N】 → 【Enter】	Set the scan interval, Can set to 8-999 seconds (The system defaults to 8 seconds)
Double click the right 【Ctrl】 → 【B】 → 【Enter】	Turn on/off the beeping sound
Double click the right 【Ctrl】 → 【T】 → 【Enter】	Turn on/off the detection function (default is off)
Double click the right 【Ctrl】 → 【R】 → 【Enter】	Reset the KVM switch to solve the keyboard and mouse freeze
Double click the right 【Ctrl】 → 【TAB】 → 【Enter】	Restore the hotkey to the default --- right 【Ctrl】
Double click the right 【Ctrl】 → 【ESC】 → 【ESC】 → 【Enter】	Reset factory setting for KVM switch to solve the problem of keyboard and mouse

Notes:

1. The "N" stands for the auto scan interval time of 8 to 999 seconds.
2. When the auto scan function is activated, you can press any key on the KVM front panel, the auto scan function turns off automatically.
3. Keyboard and mouse must be plug in the positions marked with keyboard and mouse icon, so keyboard hot keys and mouse click switching will be effective.
4. For wireless mouse and keyboard; Please plug the Bluetooth receiver into the USB keyboard port for better performance.
5. For some high speed, optical, multi-functional, gaming or mechanical keyboard or mouse, please plug into the USB 2.0 port on front panel, this connection does not support hotkey or mouse switching.

IX. Sound Settings

1. AMD HDMI Output Setting

Right click  on the desktop taskbar to popup task box , click 'Playback devices', then jump out of the interface shown in Figure A.

Then select the 'AMD HDMI Output', right click and shown as Figure B. And then select the 'Set as Default Device'.

It displayed tick status  **AMD HDMI Output**
AMD High Definition Audio Device
Default Device, which indicates successful setup as the Figure C.



Figure A

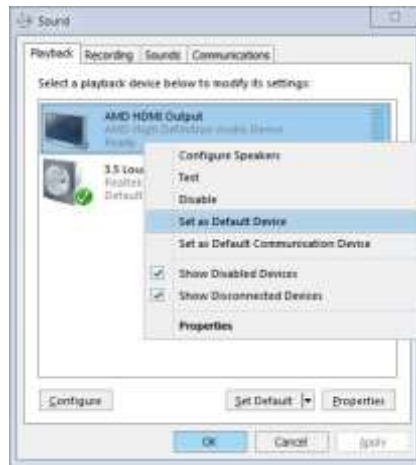




Figure B



Figure C

2 . 3.5 Interface Sound Settings

Right click  on the desktop taskbar to popup task box , click '3.5 Loudspeaker', then jump out of the interface shown in Figure A.

Then select the '3.5 Loudspeaker', right click and show as Figure B. And then select the 'Set as Default Device'.

It displayed tick status  **3.5 Loudspeaker**
Realtek High Definition Audio
Default Device, which indicates successful setup as the

Figure C.



Figure A



Figure B



Figure C

X. Box Contents:

- 1* KVM Switch
- 1*Wired remoter
- 1* power adapter
- 1* user manual in English
- Full set of USB cables
- Full set of HDMI cables (cables for monitors are not included)

XI. FAQ & Trouble Shooting

Q1. Why I cannot get extended displays or only one monitor works?

1. Make sure your computer support dual display, verify this by connecting 2 monitors to your computers directly.
2. Make sure you set your computer as extended display.
3. Make sure each computer has 2 video connections to correspondent IN A & B port (using reliable adapters if needed).

Q2: Monitors do not display or images display improperly:

1. Check if the cables are connected well or swap the cables, see if it is cable problem.
2. For a same video chain, avoid using adapters on both computer and monitor side.
3. Check if the resolution settings are aligned to the supported resolution as described.
4. Remove power saving strip if any and power cycle the KVM and reboot computers

Q3: Keyboard and/or mouse do not work.

1. Make sure the USB cable is already connected to the computers and the other end of USB is plugged in correspondent mini USB port on kvm, and KVM is powered on.
2. If keyboard and mouse stop working after a period of time, try double click the right Ctrl, then triple click ESC ,then Enter to restore the hotkey to factory setting.
3. Refer to Q4 for special keyboard and mouse like gaming, multi-media and mechanical type.

Q4. My gaming mouse or mechanical keyboard functions are not working. What shall I do?

Some special keyboard and mouse may not work properly from the designated rear USB ports, If so, please try the following:

1. Plug your keyboard or mouse into USB 3.0 HUB ports.
2. Or turn off the hotkey function by pressing the Hotkey on/off key on front panel, then the dedicated USB keyboard and mouse ports will be changed to standard USB HUB ports, Plug the wired remote switcher into KVM and use it to switch between computers

Q5. Does it work with adapters?

Yes, but depends on the adapter quality which is beyond what we can control. and the resolution output is subject to the adapters being used. DP monitors are preferred, or HDMI monitor with reliable DP to HDMI adapter. VGA and DVI monitor are not preferred.

Q6. How can I turn off the beep sound?

You can double click the right Ctrl → B → Enter to turn the beep on/off.

Q7. How Can I deactivate the mouse switching function?

1. Simply plug your mouse into on of the USB Hub Ports
2. Or turn off mouse hotkey by double clicking the right Ctrl then M then Enter.

Q8. I have other issues which are not listed above:

Please contact our Customer Care Team for support needed, we will reply within 24 hours during business days.